

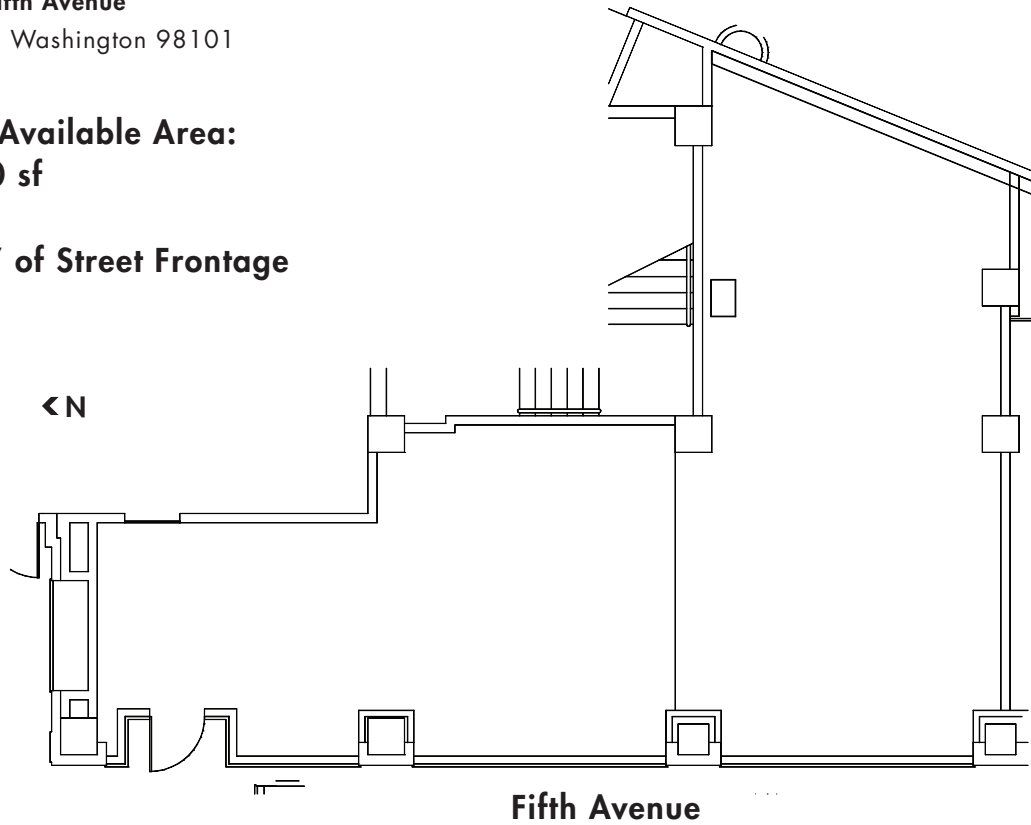


1322 FIFTH AVENUE

**1322 Fifth Avenue**  
Seattle, Washington 98101

**Total Available Area:**  
**1,220 sf**

**41'6" of Street Frontage**



**FAST FACTS**

- Fifth Avenue, between Union & University streets
- The Skinner Building, an historic, 8-story office/retail building
- Home to The 5th Avenue Theatre
- 11.1 million visitors come to Seattle each year
- 1,315,000 affluent people come downtown for the art each year
- Street frontage and window display along Fifth Avenue
- In 2005, Seattle named "hottest retail market for investment in the country for the next three years" by Marcus & Millichap Real Estate Investment Brokerage Co.

**YOUR NEIGHBORS**

- Louis Vuitton
- VESSEL
- Butch Blum
- Coach
- The Fairmont Olympic Hotel
- W Hotel
- Brooks Brothers
- St. John Boutique
- Mephisto
- Jeri Rice
- Fox's Gem Shop
- Calidora Skin Clinic



Unico  
1215 Fourth Avenue, Suite 600  
Seattle, WA 98161  
T [206] 628.5050  
F [206] 628.5067

**Kathryn Colgan, (206) 628-5050**  
kathrync@unicoprop.com