



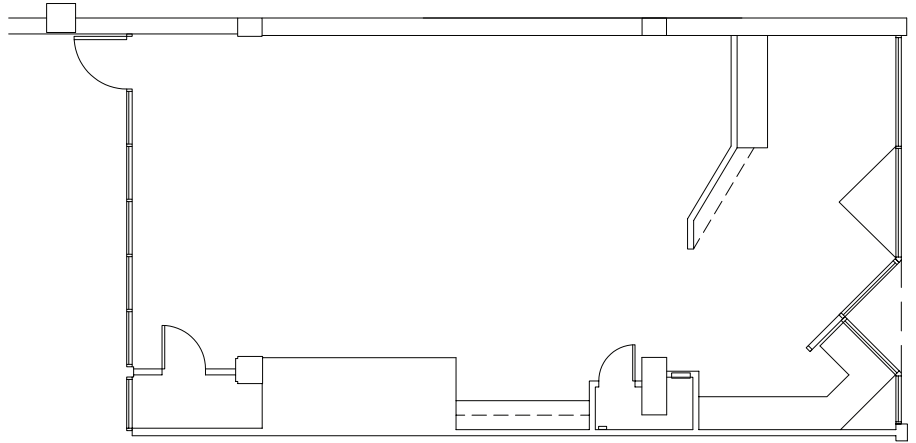
RAINIER SQUARE

Upper Fifth

SUITE 202

Suite 202
Seattle, Washington 98101

Total Available Area:
1,733 sf



← N

FAST FACTS

- On Fourth Avenue, between Union and University streets
- Rainier Tower, completed in 1977
- 45,000 people visit Upper Fifth each day
- 1,315,000 affluent people come downtown for the arts each year
- 11.1 million visitors come to Seattle each year
- 114 parking stalls, valet parking in Rainier Tower
- In 2005, Seattle named "hottest retail market for investment in the country for the next three years" by Marcus & Millichap Real Estate Investment Brokerage Co.



YOUR NEIGHBORS

- The Fairmont Olympic Hotel, Seattle's only five diamond luxury hotel
- Louis Vuitton
- Jos. A. Bank Clothiers
- Dilettante Mocha Café
- The Cobb, a 91-apartment luxury residence
- The 5th Avenue Theatre
- VESSEL
- Brooks Brothers
- David Lawrence
- Butch Blum
- Fox's Gem Shop
- Foster/White Gallery
- Mephisto



Unico
1215 Fourth Avenue, Suite 600
Seattle, WA 98161
T [206] 628.5050
F [206] 628.5067

Kathryn Colgan, (206) 628-5050
kathrync@unicoprop.com