



RAINIER SQUARE

Upper Fifth

1326 FIFTH AVENUE

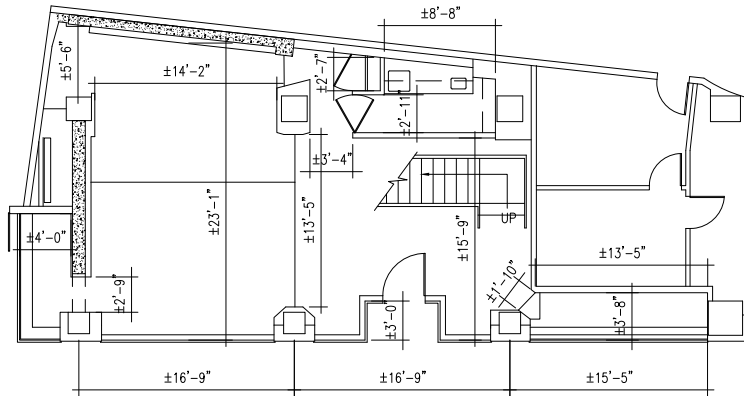
1326 Fifth Avenue
Seattle, Washington 98101

Total Available Area:
2,641 sf

Street Frontage:
54 feet

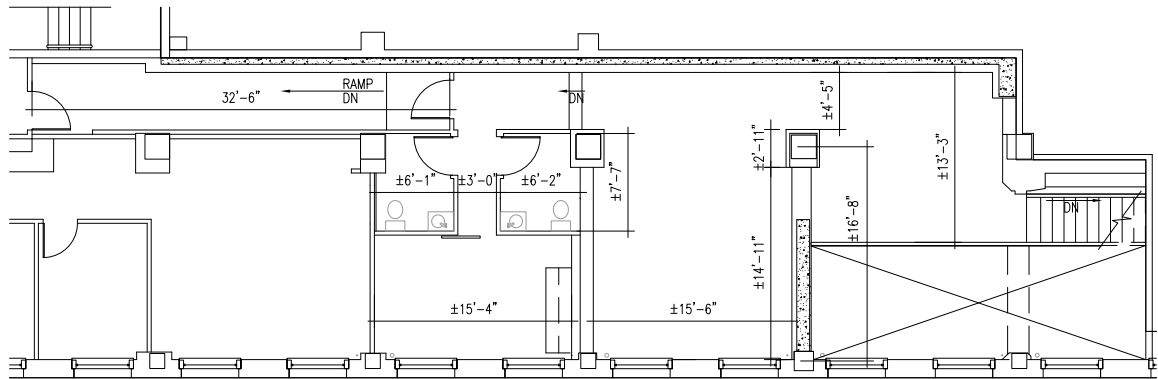
First Floor RSF:
1,021 RSF

Second Floor RSF:
1,620 RSF



1ST FLOOR

SCALE: 1/8" = 1'-0"



2ND FLOOR

SCALE: 1/8" = 1'-0"

FAST FACTS

- Fifth Avenue, between Union & University streets
- The Skinner Building, an historic, 8-story office/retail building
- Home to The 5th Avenue Theatre
- Street frontage and window display along Fifth Avenue
- 25 million visitors, arts and sports patrons, and conventioners came to Seattle in 2009

YOUR NEIGHBORS

- Louis Vuitton
- Nancy Meyer Fine Lingerie
- Gucci
- Alexandria Rossoff Jewels & Rare Finds
- The Fairmont Olympic Hotel
- Omega of Switzerland
- The 5th Avenue Theatre
- Brooks Brothers
- St. John Boutique
- Fox's Gem Shop
- Mephisto
- Calidora Skin Clinic
- Duxiana



Unico
1215 Fourth Avenue, Suite 600
Seattle, WA 98161
T [206] 628-5050
F [206] 628-5067

Kathryn Colgan, [206] 628-5050
kathrync@unicoprop.com